

080689621239

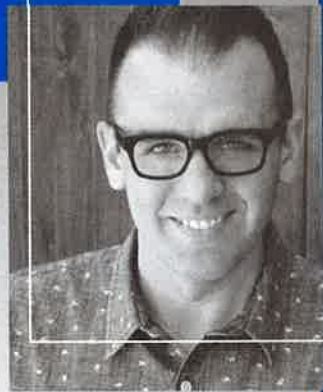


Psalm 23: Surely Goodness, Surely Mercy

Arr. Semsen

SATB

THE  
*Daniel Semsen*  
SIGNATURE SERIES



PSALM 23:  
SURELY GOODNESS,  
SURELY MERCY

Words and Music by  
SHANE BARNARD

Arranged and Orchestrated by  
DANIEL SEMSEN

	<b>PHYSICAL</b>	<b>DIGITAL</b>
Anthem	080689621239	080689367182
ChoralTrax (Stereo/Split/Demo)	080689310331	080689368189
Choral Demonstration		QZ7ZL1701268
Orchestration	080689441080	080689369186
Chord Chart/Lead Sheet		080689370182
Stem Mixes	080689865145	080689375187
Practice Trax (Soprano)		080689371189
Practice Trax (Alto)		080689372186
Practice Trax (Tenor)		080689373183
Practice Trax (Bass)		080689374180



**WORD MUSIC**  
& CHURCH RESOURCES

[wordchoralclub.com](http://wordchoralclub.com)  
NASHVILLE, TN

# 2 Psalm 23: Surely Goodness, Surely Mercy

Words and Music by  
SHANE BARNARD  
Arranged by Daniel Semsen

**1/12** Ballad (♩ = 55)

C2(#4) C  $\frac{C}{G}$  G  $\frac{G}{B}$  C2(#4) C  $\frac{G}{C}$  C

**2/13**

WOMEN connected and expressive  
*mp*

4

The Lord is my Shep-herd, I shall not want.

G C D Gsus G

**3/14**

CHOIR  
*mp*

7

In green pas - tures He makes me lie\_\_ down. He re-

C D G

**1/9** This symbol refers to the corresponding track numbers on the Accompaniment ChoralTrax.  
The first number refers to the Stereo Trax; the second number to the Split Trax.

Performance Time: 5:34

© Copyright 2015, this arr. © Copyright 2019 Songs From Wellhouse  
(Adm. by Wellhouse Entertainment, LLC). All Rights Reserved. Used by Permission.

EVEN IF YOU POSSESS A CCLI LICENSE, YOU MAY NOT COPY THIS MUSIC.  
If you have question about CCLI, please call 1-800-234-2446.

9

stores my soul and leads me on for His name,

C D Em Bm7 C  $\frac{G}{B}$

11 **4/15** *rit.*

for His great name. Sure - ly

Am7 Dsus D

*rit.*

13 *mf a tempo*

good - ness, sure - ly mer - cy, right be-side me all my

C2(#4) C G G C2(#4) C  $\frac{G}{C}$  C

*mf a tempo*

4  
16

days, \_\_\_\_\_ and I will dwell \_\_\_\_\_ in Your house for -

G D/C C

18

ev - er \_\_\_\_\_ and bless Your ho - ly name.

C/G G Am7 D Dsus

20 **5/16**

*mf*

E $\flat$  F E $\flat$  F

WOMEN  
*mp*

22

MEN *mf* You pre - pare a ta - ble right be - fore me

Ooo

*mp*

E<sup>b</sup> F B<sup>b</sup>sus B<sup>b</sup>

Detailed description: This system contains measures 22 and 23. The vocal line for men starts with a rest in measure 22 and begins in measure 23 with the lyrics 'You pre - pare a ta - ble right be - fore me'. A 'WOMEN' part is indicated above measure 23 with the lyrics 'Ooo' and a melodic line. The piano accompaniment is marked *mp* and features chords E<sup>b</sup>, F, B<sup>b</sup>sus, and B<sup>b</sup> over the two measures.

24

in the pres - ence of my en - e - mies. Ooo

Though the

E<sup>b</sup> F B<sup>b</sup> B<sup>b</sup>/<sub>D</sub>

Detailed description: This system contains measures 24 and 25. The vocal line continues with 'in the pres - ence of my en - e - mies.' and 'Ooo' in measure 24, and 'Though the' in measure 25. The piano accompaniment features chords E<sup>b</sup>, F, B<sup>b</sup>, and B<sup>b</sup>/<sub>D</sub> over the two measures.

26

ar - row flies and the ter - ror of night is at my door,

E<sup>b</sup> F Gm Dm7 E<sup>b</sup> B<sup>b</sup>/<sub>D</sub>

Detailed description: This system contains measures 26 and 27. The vocal line continues with 'ar - row flies and the ter - ror of night is at my door,'. The piano accompaniment features chords E<sup>b</sup>, F, Gm, Dm7, E<sup>b</sup>, and B<sup>b</sup>/<sub>D</sub> over the two measures.

*rit.*

I'll trust You, Lord. Trust You, Lord. Sure - ly

Cm7 Fsus F B<sup>b</sup>/<sub>D</sub>

*rit.*

good - ness, ——— sure - ly mer - cy, ——— right be -

E<sup>b</sup>2(#4) E<sup>b</sup> E<sup>b</sup>/<sub>B<sup>b</sup></sub> B<sup>b</sup>

*mf a tempo*

side me all my ——— days, ——— and I will

E<sup>b</sup>2(#4) E<sup>b</sup> B<sup>b</sup>/<sub>E<sup>b</sup></sub> E<sup>b</sup> B<sup>b</sup> B<sup>b</sup>/<sub>D</sub>

34

dwell in Your house for - ev - er and

$E^b$   $E^b$   $E^b/B^b$   $B^b$

36

**7/18**

bless Your ho - ly name. Sure - ly  
Sure - ly,

$Cm7$   $F$   $Fsus$   $B^bsus$   $B^b$

*f*

38

good - ness, sure - ly mer - cy, right be -  
sure - ly good - ness, sure - ly mer - cy,

$E^b2(\#4)$   $E^b$   $E^b/B^b$   $B^b$   $B^b/D$   $D$

*f*

8  
40

side me all my days. And I will  
be-side me all my, all of my days.

E<sup>b</sup>2(#4) E<sup>b</sup> B<sup>b</sup>/<sub>E<sup>b</sup></sub> E<sup>b</sup> B<sup>b</sup> B<sup>b</sup> D

42

dwel\_\_ in Your house for - ev - er and  
I will dwell\_\_ in Your house for-ev - er

F E<sup>b</sup> E<sup>b</sup> E<sup>b</sup> B<sup>b</sup> B<sup>b</sup>

44

8/19

ble<sup>s</sup>s Your ho - ly name. *ff*  
and ble<sup>s</sup>s Your ho - ly name. E-ven though I

Cm7 F F<sup>sus</sup> B<sup>b</sup><sub>sus</sub> B<sup>b</sup>



46

walk through the val-ley of the shad-ow of death, \_\_\_\_\_ I will fear no e-

Chords: F, Eb, Eb

48

vil! \_\_\_\_\_ E-ven though I

Chords: Eb/Bb, Bb, A, Bb, Cm, Bb, F, Bb2/D

50

walk through the val-ley of the shad-ow of death, \_\_\_\_\_ You are on \_\_\_\_\_ my side!

Chords: F, Eb, Eb

10  
52

9/20

E-ven though I

B $\flat$  B $\flat$  Cm7 B $\flat$ /D Dm7 E $\flat$ /D

54

walk through the val-ley of the shad-ow of death, I will fear no e -

F E $\flat$

*ff* (Drums cont.)

56

vil! E-ven though I

F/A B $\flat$  Cm B $\flat$  Dm7 E $\flat$ /D

58

walk through the val-ley of the shad-ow of death, You are on my side!

F

E<sup>b</sup>

(Drums cont.)

60

10/21

*slight rit.*

*mp*

Rubato (♩=52)

Sure - ly good - ness, sure - ly

B<sup>b</sup>

F

Rubato (♩=52)

E<sup>b</sup>2(#4) E<sup>b</sup>

*f*

*slight rit.*

*mp*

63

mer - cy, right be - side me all my

E<sup>b</sup>  
B<sup>b</sup>

B<sup>b</sup>

B<sup>b</sup>  
D

E<sup>b</sup>2(#4)

E<sup>b</sup>

B<sup>b</sup>  
E<sup>b</sup>

E<sup>b</sup>

12  
65

11/22

and

days, \_\_\_\_\_ and I will dwell in Your house for - ev - er,

B $\flat$                       B $\flat$ 2                      F                      E $\flat$                       E $\flat$                       E $\flat$                       B $\flat$                       B $\flat$

D                      E $\flat$                       B $\flat$                       B $\flat$

68      bless Your ho - ly name, \_\_\_\_\_ and bless Your ho - ly name,  
 ho - ly \_\_\_\_\_ name,

Cm7                      F                      Gm7 F(add4)                      E $\flat$                       B $\flat$                       Cm7                      F

D

*molto rit.*                      *p*

71      and bless Your ho - ly name.  
 ho - ly \_\_\_\_\_ name,      and bless Your ho - ly name.

Gm7                      F                      E $\flat$                       B $\flat$                       Cm7                      F sus                      F                      B $\flat$

D

*molto rit.*

